

SECTION T. 8 S. E. 1/4 NW  
LINCOLN COUNTY, OREGON

SILETZ BAY

- RESIDENTIAL
- MULTI-FAMILY
- GENERAL COMMERCIAL
- COMMON AREAS (roads parks)
- RECREATION
- CHANGE FROM A2 - R1 ZONE (reclassified)

# SHANNAN PLANNED DEVELOPMENT



P D R I

Owners:  
Shannon Prop. Inc.  
John P. Gray

Willard Schworz and Assoc.  
P.O. Box 415 Glenden Beach  
Oregon 97338

10  
15  
9  
16  
185 R111 W.W.M.

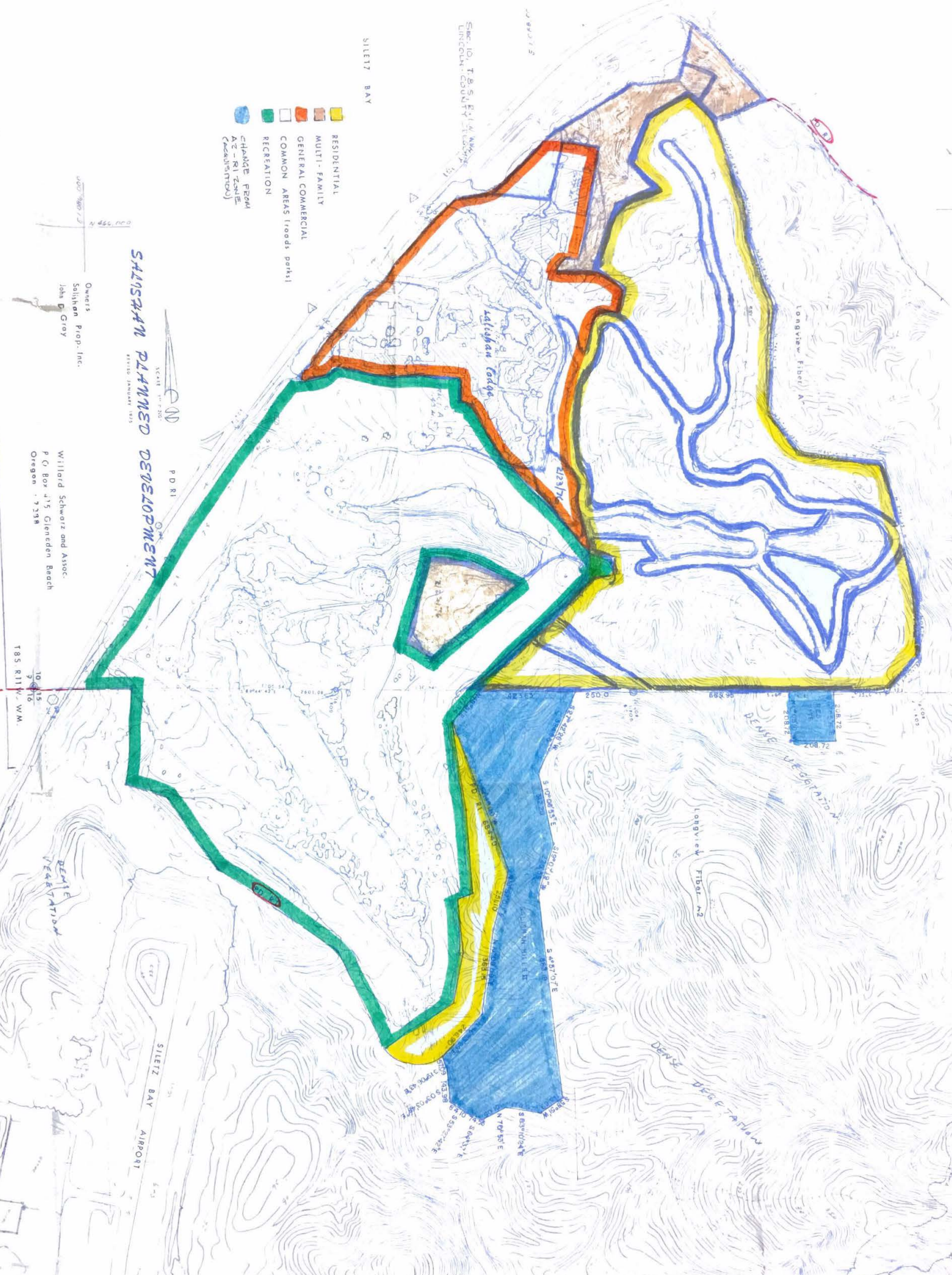
SILETZ BAY AIRPORT

Shannon Lodge

Longview Fiber A2







Longview Fiber A2

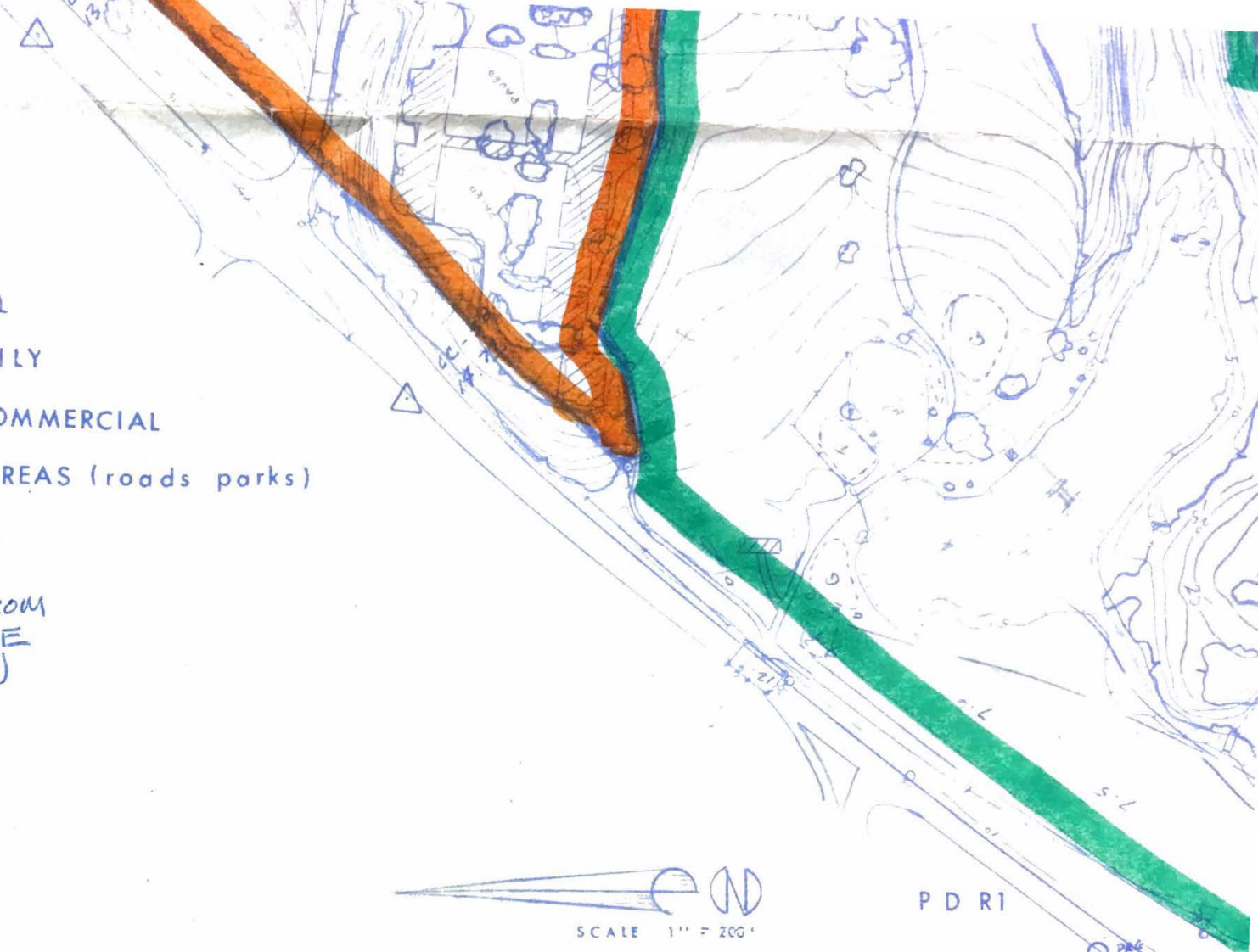
Shannon Lodge





ILETZ BAY

-  RESIDENTIAL
-  MULTI-FAMILY
-  GENERAL COMMERCIAL
-  COMMON AREAS (roads parks)
-  RECREATION
-  CHANGE FROM AZ-R1 ZONE (ACQUISITION)



  
 SCALE 1" = 200'

# SALISHAN PLANNED DEVELOPMENT

REVISED JANUARY 1975

N 466,000  
 E 1,086,000

Owners  
 Salishan Prop. Inc.  
 John D Gray

Willard Schwarz and Asso  
 P O Box 415 Gleneden B